



 **VOLUNTARY
RETURN HOME**

© IOM 2018

**KOKANISA KOZONGA NA MBOKA NA
YO? TOKOKI KOSALISA YO KOZONGA
NA BOLINGO YA BISO MOKO. FEDASIL
EKOBONGISA MPE EKOPEZA MBONGO YA
VOYAGE NA YO YA KOZONGA. MPE ELONGO
TOKOTALELA NDENGE NINI TOKOKI
KOSUNGA YO NA KATI YA EKOLO NA YO.**

**0800 32 745 (free number)
www.voluntaryreturn.be**

NINI WANA KONDIMA KOZONGA?

1

Ezali kondima kozonga mboka na yo ya mbotama. Yo moko okolinga kozonga mboka na yo ya mbotama. Mobembo ekosalema lolenge moko na bandeko nyonso na kati ya pepo. Bakonzi ya mboka na yo ya mbotama bakozwa sango ya bozongi na yo te. Okoki koboya kozonga tii na ngonga ya komatela pepo.

LOLENGE NINI KOSENGA BOZONGI?

Okoki kotuna na bisika ebele eyebani na mboka Belgique,. Okoki pe kosolola na bandeko oyo basalisaka yo po na likambo ya bozongi, to pe kobenga na numero oyo 080032745 ezali ofele.

2

NANI AKOBONGISA BOZONGI NA NGAI?

3

Fedasil ye nde mobongisi makambo po na bozongi na mboka na yo. Lisanga ya mokili po na migration nde bakobongisa bozongi na pepo (to na bus po na bato ya Balkans) pe Caritas ya mokili mobimba bakosalisa yo sima ya kokoma na mboka.

NAKOFUTA YANGO?

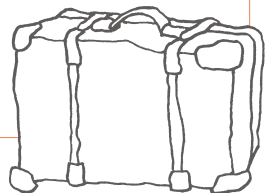
Te, okofuta ata eloko moko te. Fedasil nde akofuta mobembo wana ezali na pepo, akofuta pe bus tii na esika ya kozwa pepo. Yo moko osengeli kokende kozwa mikanda na yo ya mobembo na consulat, nde na sima bakozongisela yo pe mbongo yango liboso ya kozwa pepo.

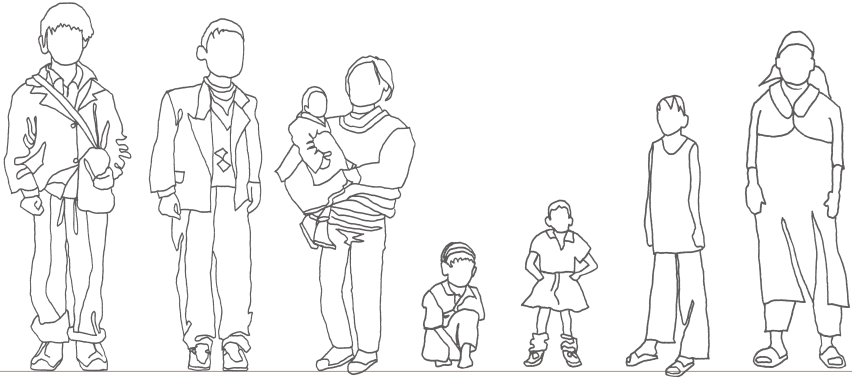
4

BISAKA BONI NASENGELI KOMEMA?

5

Osengeli kotosa mibeko oyo epesami na bandeko oyo basalaka na kompani ya pepo to pe na bus Kolekisa bisaka kilo te!





MOBEMBO EKOSALEMA ELONGO NA NDEKO MOSUSU?

6

Boye, liboso ya kolongwa mboka Belgique, ndeko moko ya lisanga ya OIM akoyamba yo pe akopesa yo mokanda ya pepo na mwa mbongo. Ndeko wana akotika yo na ndelo. Soki pe olingi, moto mosusu akozela yo na mboka na yo ya mbotama, na ngonga ya kokita pepo kuna. Bakosenga yo olata saki ya OIM po bayeba yo.

KOVANDA NA MBOKA NA NGAI EZALI PASI, LISUNGI NINI BOKOKI KOPESA NGAI?

Tosalaka na baninga mosusu kuna na mboka na yo ya mbotama. Bango nde bakoki kosalisa yo pona bozongeli na yo, po na kobanda koluka mosala, po na komisunga pe po na kosalisa na ngonga ya maladi, na pe misala misusu. Lisalisi ezali ndenge moko te po na moto nyonso. Mooto na moto azali na ndenge na ye ya kosengelea lisungi. Tuna moto na yo soki lisungi nini ye to moto mosusu akoki kopesa yo. Yeba pe ete okozwa mwa mbongo liboso ya komatela pepo.

7

BRUSSELS

Fedasil Return Desk in Brussels
 1000 – rue d'Arenberg 8
 02 897 53 00
 Mon to Fri, 9.30 am – 12 pm;
 or by appointment
 www.voluntaryreturn.be

CAW Brabantia (Caritas)
 1210 – Rue de la Charité 43
 02/229 36 11
 8.30 am – 11.30 am
 www.caritas.be

Centre Social Protestant
 1050 – rue Cans 12
 02/500 10 13
 By appointment
 www.csp-psc.be

Solidarité Socialiste (SES0)
 1060 – rue de Parme 26
 02/533 39 84
 Mon & Wed, 2 pm – 4 pm;
 Tue & Thu, by appointment
 www.sesoweb.org

Association Européenne Russophone
 1050 – Clos du Parnasse 3/i
 0496 96 75 15 (by appointment)
 www.bfro.be

LIÈGE

Fedasil Return Desk in Liège
 4000 – Quai de la Batte 10
 04/340 20 85
 Mon to Thu, 9.30 am – 12 pm;
 or by appointment -
 www.voluntaryreturn.be

Aide aux Personnes Déplacées
 4020 – rue Jean d'Outremeuse 93
 04/342 14 44
 Mon, Wed, Thu & Fri, 9 am – 12pm
 www.aideauxpersonnesdeplacees.be

Cap Migrants
 4020 – rue de Fétinne 98
 04/222 36 16
 Mon, Tue, Wed & Fri, 8.30 am – 12.30 pm
 (by appointment)

VERVIERS

Espace 28
 4800 – rue de la Colline 18
 087/34 10 53
 Mon & Thu, 9 am – 12 pm;
 Tue, 1.30 pm – 4.30 pm
 www.espace28.be

EUPEN

Info-Integration - Belgisches Rotes Kreuz
 4700 - Hillstraße 7
 087/76 59 71
 Tue, 10 am – 12 pm; Wed, 2 pm – 4 pm;
 or by appointment
 www.info-integration.be

MONS

Aide aux Personnes Déplacées
 7000 – rue des Beuoux 4
 0478/02 19 90
 Thu, 9 am – 11.30 am
 www.aideauxpersonnesdeplacees.be

CHARLEROI

Fedasil Return Desk in Charleroi
 6000 - Boulevard Frans Dewandre 1A
 071/64 49 17
 Mon to Thu, 9.30 am – 12 pm ;
 or by appointment
 www.voluntaryreturn.be

Accueil et Promotion des Immigrés
 6000 – rue Léon Bernus 35
 071/31 88 70
 Mon & Wed, 9 am – 12 pm
 www.apicharleroi.be

BRAINE-LE-COMTE

Aide aux Personnes Déplacées
 7090 – rue Pierre Damien 14
 067/63 60 29
 Thu, 9 am – 11.30 am
 www.aideauxpersonnesdeplacees.be

NAMUR

Aide aux Personnes Déplacées
 5000 – rue Saint-Nicolas 84
 081/83 39 51
 Wed, 9 am – 12.30 pm;
 Thu, 2.30 pm – 4.30pm
 www.aideauxpersonnesdeplacees.be

Centre Immigrés Namur - Luxembourg
 5000 - Place d'Illon 13
 081/22 42 86 – Tue & Thu, 1 pm – 4.30 pm

LUXEMBOURG

Centre Immigrés Namur-Luxembourg
 06/129 25 18 – www.cinl.be

Marche-en-Famenne 6900
 Avenue du Monument 8A1
 Thu, 9 am – 12.30 pm

Bertrix 6880
 rue de la Gare 20
 Mon, 9 am – 12.30 pm

Arlon 6700
 l'Esplanade Didier 42
 Thu, 9.30 am – 12.30 pm

PERWEZ

L'Hirondelle ASBL
 1360 – Rue de la Station 28
 081/34 34 36
 Lu au ve, 9h-12h

GHENT

Fedasil Return Desk in Ghent
 9000 – Kooopvaardijlaan 3
 09/225 42 29
 Mon to Thu, 9.30 am – 12 pm;
 or by appointment
 www.voluntaryreturn.be

ANTWERP

Fedasil Return Desk in Antwerp
 2018 - Lamorinièrestraat 137
 0471/27 00 89 or 0476/96 43 91
 Mon to Thu, 9.30 am – 12 pm,
 or by appointment
 www.voluntaryreturn.be

CAW Antwerpen – Adviescentrum
 2060 – Lange Stuivenbergstraat 54-56
 03/235 34 05
 www.pscantwerpen.be

MECHELEN

Steunpunt Asiel & Migratie vzw
 2800 – Sint-Romboutskerkhof 1 A
 015/34 07 88
 Mon, Tue & Fri, 1 pm – 4 pm;
 Tue & Thu, 9.30 am – 12 pm & 1 pm – 4 pm
 www.vluchtelingendienst.be

LEUVEN

Vluchtelingenonthaal CAW Oost-Brabant
 3000 – Redingenstraat 6
 016/46 49 61
 Mon & Wed, 9 am – 11.30 am
 www.cawoostbrabant.be

OSTEND

Onthaal Welzijn Oostende
 (CAW Noordwest Vlaanderen)
 8400 – Hospitaalstraat 35
 059/59 21 21
 Mon to Fri, 9 am – 12 pm
 www.cawnoordwestvlaanderen.be

BRUGES

Algemeen Onthaal Brugge
 (CAW Noordwest Vlaanderen)
 8000 – Ruddershove 8
 050/44 57 00
 Mon to Fri, 9 am – 12.30 pm
 www.cawnoordwestvlaanderen.be

SINT-NIKLAAS

CAW Oost Vlaanderen
 9100 – Gasmeterstraat 81B
 078/15 03 00
 Mon to Fri, 9 am – 12 pm
 www.cawoostvlaanderen.be

KUURNE

Buurt Initiatieven Kuurne
 8520 – Kerkstraat 24
 056/32 53 12 or 0486 93 15 25
 8 am – 4.30 pm
 www.bikvzw.be

CAW LIMBURG

www.cawlimburg.be
 Pelt 3900 - Burg. Laenenstraat 7/14
 011/64 05 00 or 0800 13 500
 Sint-Truiden 3800 - Kazernestraat 34
 011/68 86 00 or 0800 13 500
 Hasselt 3500 - Rozenstraat 28
 011/85 99 20 or 0800 13 500
 Genk 3600 - Welzijns-campus 19/2
 089/36 36 25 or 0800 13 500